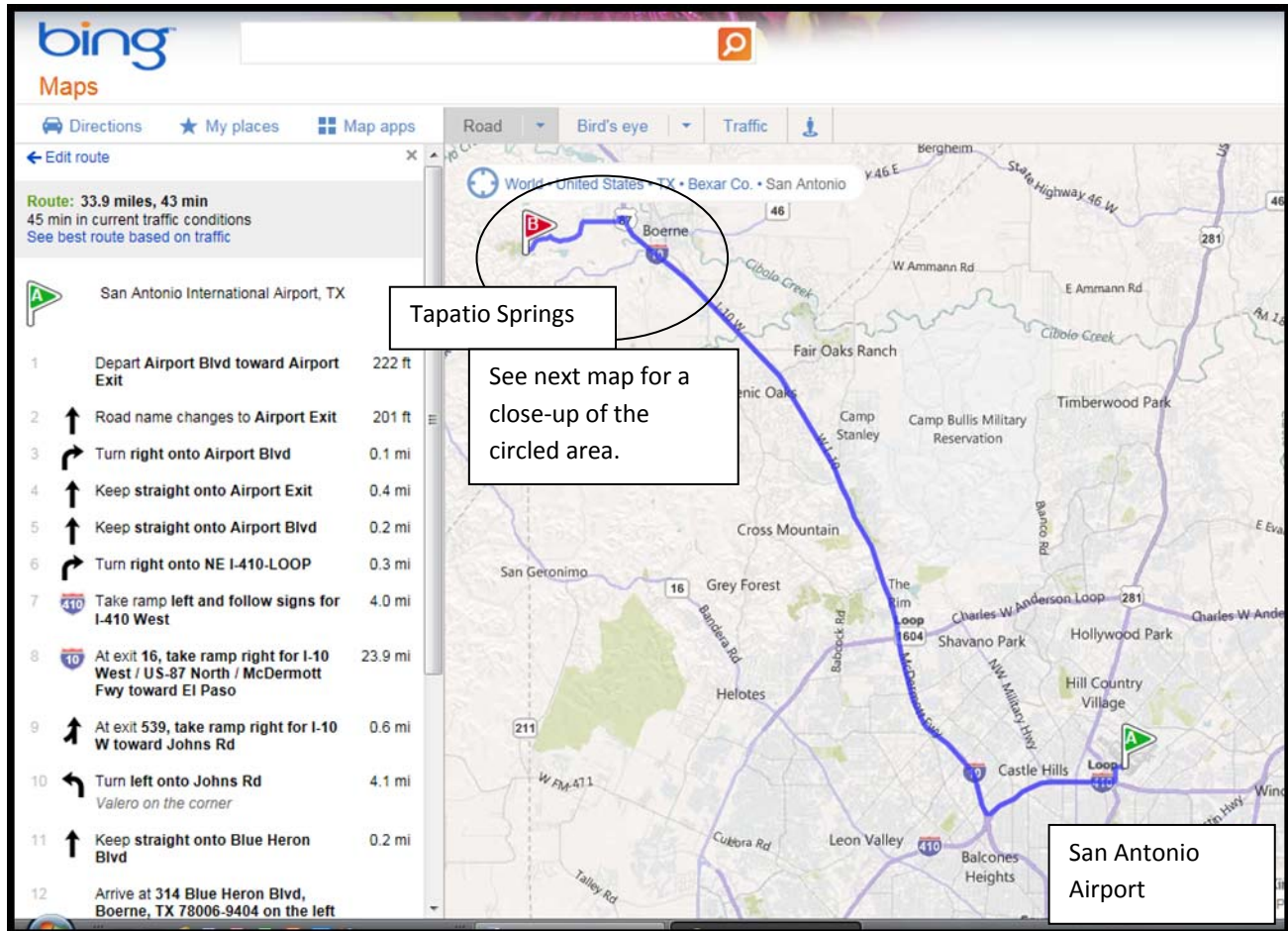
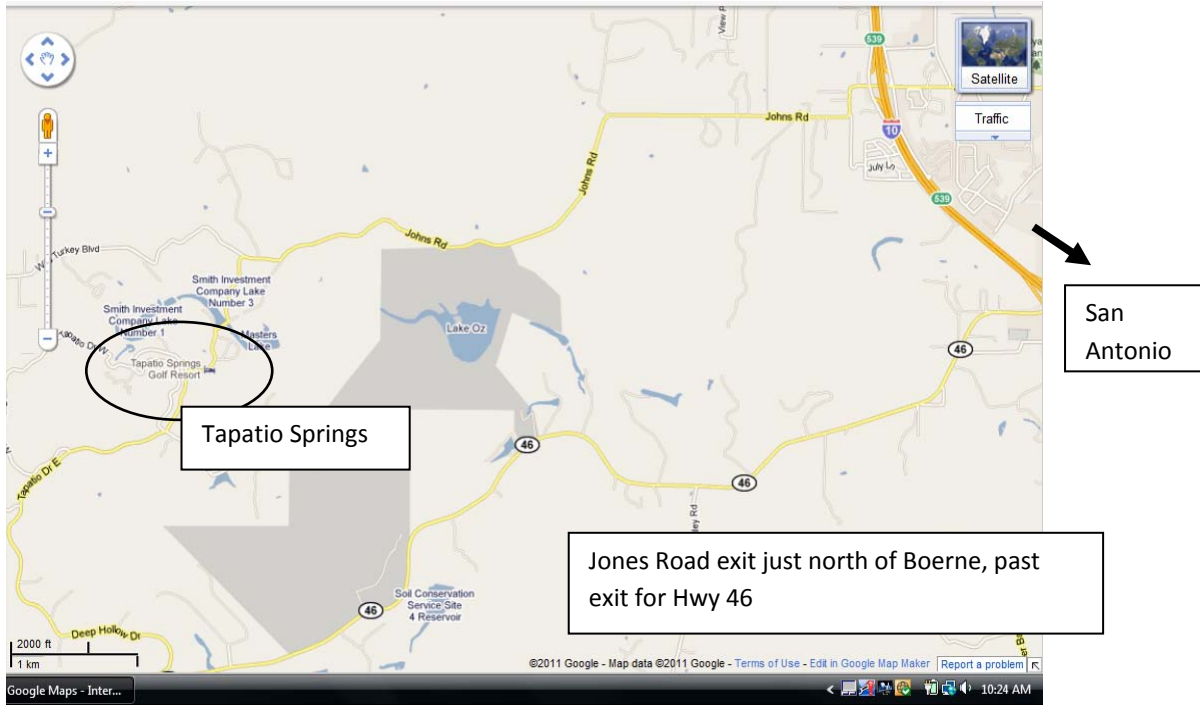


Map from San Antonio Airport to Tapatio Springs Resort (March 2012)

Leaving the airport is tricky. If you end up on Hwy 281 (going North) just stay on that highway and then take Hwy 1604 going west. Please be aware that there is usually **very heavy traffic on Hwy 1604** especially between 4PM-7PM on weekdays. There can be a long line of cars waiting to exit onto I-10. You'll be looking for **I-10 West (toward El Paso)**.



Map to Tapatio Springs Resort and GSTRC



Map to San Antonio Rose Palace (GSTRC) from Tapatio Springs

